



Pacific Consulting Engineers
 9739 North Vista Drive
 Kingman, AZ 86401
 916-296-7376

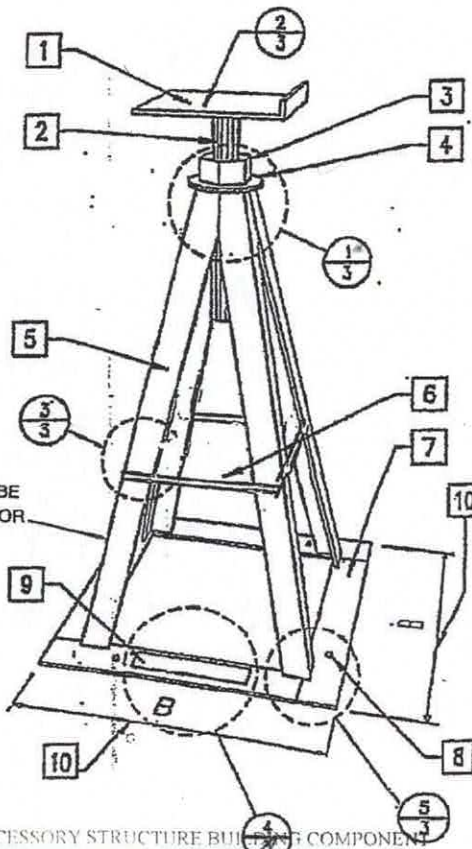
ABESCO
 5851 FLORIN - PERKINS ROAD
 SACRAMENTO, CAL 95828
 PH: (800) 382-8851
 FAX: (916) 383-5207

LISTED BY CAPITOL ENGINEERING
 LABORATORIES. LISTING #6365

Sheet	1 of 5
Date	
Rev	
Drawing	

MANUFACTURED HOME SUPPORT PIER

Pier Capacity: 6000 lbs
 (Based on tested ultimate load divided
 by a factor of safety of 3)



DRAWING NOTES

- 1 Pier Cap. See Sheet 3 Detail 2 for standard cap and Sheets 4 & 5 for alternate pier caps.
- 2 3/4" Diameter x 5' ASTM A307 Threaded Rod
- 3 3/4" Dia. ASTM A307 Hex Nut. See Sheet 3 Details 1 & 2 for optional double nut.
- 4 1" x 1" x 0.095 welded to the formed angle legs
- 5 L 1" x 1" ASTM A36 steel formed angle legs. See Pier Schedule for gauge of legs.
- 6 1/4" Dia Hot Roll Brace A36 steel braces. See Pier Schedule for height and use of braces.
- 7 1-1/4" x 14 GA. ASTM A36 steel plate base strips. See Page 3 Detail 5.
- 8 [1] #12 x 1" Galv. self-drilling self-tapping screw or drill for [1] #10 x 1" Galv. wood screw at each corner.
- 9 Label. See Sheet 3 Detail 4.
- 10 Base Width "B". See Pier Schedule.

MOBILEHOME & ACCESSORY STRUCTURE BUILDING COMPONENTS
 HEALTH AND SAFETY CODE, DIVISION 12, PART 2
 APPROVED

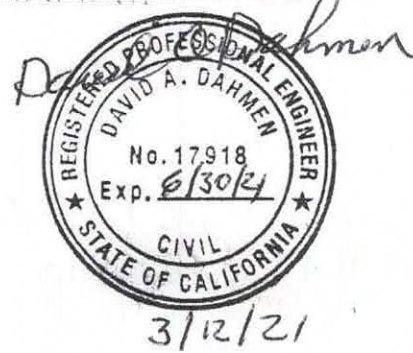
Approval does not authorize or approve any omission or deviation
 from requirements of applicable State laws and regulations.

STATE OF CALIFORNIA
 DEPARTMENT OF HOUSING AND COMMUNITY DEVELOPMENT
 DIVISION OF CODES AND STANDARDS

By [Signature] Date 2/31/21
 (signature)

BP NO. 07-05

This Approval Expires 3/16/23





Pacific Consulting Engineers
 9739 North Vista Drive
 Kingman, AZ 86401
 916-296-7376

ABESCO
 5851 FLORIN - PERKINS ROAD
 SACRAMENTO, CAL 95828
 PH: (800) 382-8831
 FAX: (916) 383-5207

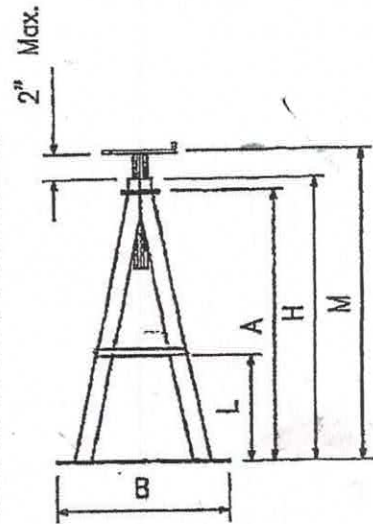
LISTED BY CAPITOL ENGINEERING
 LABORATORIES. LISTING #6365

Sheet	2 of 6
Date:	
Rev:	
Drawing:	

PIER SCHEDULE AND ELEVATION

PIER SCHEDULE					
Nominal Height	Maximum Height M	Actual Height H	Base Width B	Brace Height L	Leg Angle Gauge
6	8	5-1/2	7-1/4	Not Used	12
8	10	7-1/2	7-1/4	Not Used	12
10	12	9-1/2	9-1/4	Not Used	12
12	14	11-1/2	9-1/4	Not Used	12
14	16	13-1/2	9-1/4	Not Used	12
16	18	15-1/2	11-1/4	Not Used	12
18	20	17-1/2	11-1/4	Not Used	12
20	22	19-1/2	11-1/4	Not Used	12
22	24	21-1/2	11-1/4	Not Used	12
24	26	23-1/2	11-1/4	11	12
26	28	25-1/2	11-1/4	12	12
28	30	27-1/2	11-1/4	13	12
30	32	29-1/2	11-1/4	14	12
32	34	31-1/2	11-1/4	15	12
34	36	33-1/2	11-1/4	16	12
36	38	35-1/2	11-1/4	17	12

NOTE: All dimensions are in inches



PE Pacific Consulting Engineers
 9739 North Vista Drive
 Kingman, AZ 86401
 916-296-7376

ABESCO
 5851 FLORIN - PERKINS ROAD
 SACRAMENTO, CAL. 95828
 PH: (800) 382-8831
 FAX: (916) 383-5207

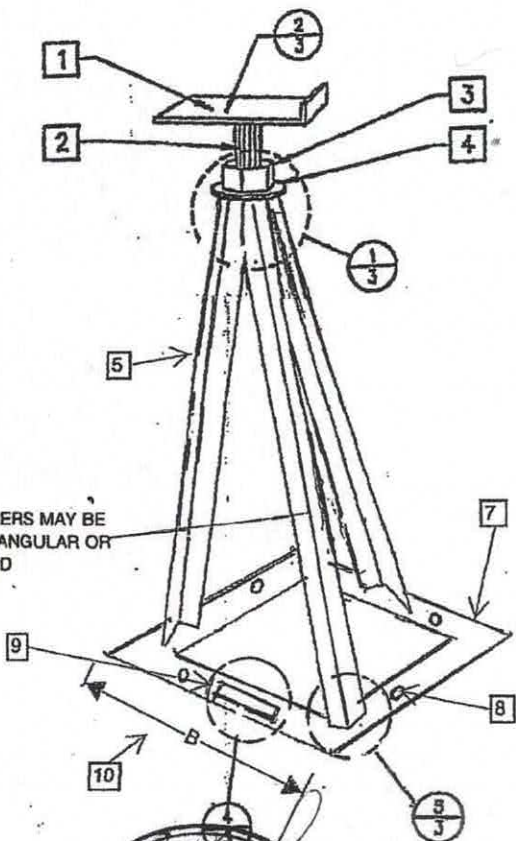
LISTED BY CAPITOL ENGINEERING
 LABORATORIES, LISTING #6365

Sheet	4 of 8
Date	
Rev	
Drawing	

MANUFACTURED HOME SUPPORT PIER

ASYMMETRICAL PIER

Pier Capacity: 3000 lbs
 (Based on tested ultimate load divided
 by a factor of safety of 3)



DRAWING NOTES

- 1 Pier Cap. See Sheet 3 Detail 2 for standard cap and Sheets 4 & 5 for alternate pier caps.
- 2 3/4" Diameter x 5" ASTM A307 Threaded Rod
- 3 3/4" Dia. ASTM A307 Hex Nut. See Sheet 3 Details 1 & 2 for optional double nut.
- 4 1" x 1" x 0.095 welded to the formed angle legs
- 5 L 1" x 1" ASTM A36 steel formed angle legs. See Pier Schedule for gauge of legs.
- 7 2-1/4" x 14 ga. ASTM A36 steel plate base strips. See Page 3 Detail 5.
- 8 [1] #12 x 1" Galv. self-drilling self-tapping screw or drill for [1] #10 x 1" Galv. wood screw at each corner.
- 9 Label. See Sheet 3 Detail 4.
- 10 Base Width "B". See Pier Schedule.



3-12-21

Approval does not authorize or approve any omission or deviation from requirements of applicable State laws and regulations.

STATE OF CALIFORNIA
 DEPARTMENT OF HOUSING AND COMMUNITY DEVELOPMENT
 DIVISION OF CODES AND STANDARDS

By [Signature] Date 3/31/21
 (signature)

BP NO. 07-06

This Approval Expires 3/6/23



Pacific Consulting Engineers
 9739 North Vista Drive
 Kingman, AZ 86401
 916-296-7376

ABESCO
 5851 FLORIN - PERKINS ROAD
 SACRAMENTO, CA 95828
 PH: (800) 382-8831
 FAX: (916) 383-5207

LISTED BY CAPITOL ENGINEERING
 LABORATORIES. LISTING #6365

Sheet 5 of 8
Date:
Drawing:

PIER SCHEDULE AND ELEVATION

PIER SCHEDULE					
Nominal Height	Maximum Height M	Actual Height H	Base Width B	Brace Height L	Leg Angle Gauge
6	8	5-1/2	7-1/4	Not Used	12
8	10	7-1/2	7-1/4	Not Used	12
10	12	9-1/2	9-1/4	Not Used	12
12	14	11-1/2	9-1/4	Not Used	12
14	16	13-1/2	9-1/4	Not Used	12
16	18	15-1/2	11-1/4	Not Used	12
18	20	17-1/2	11-1/4	Not Used	12
20	22	19-1/2	11-1/4	Not Used	12
22	24	21-1/2	11-1/4	Not Used	12
24	26	23-1/2	11-1/4	Not Used	12
26	28	25-1/2	11-1/4	Not Used	12
28	30	27-1/2	11-1/4	Not Used	12
30	32	29-1/2	11-1/4	Not Used	12
32	34	31-1/2	11-1/4	Not Used	12
34	36	33-1/2	11-1/4	Not Used	12
36	38	35-1/2	11-1/4	Not Used	12

NOTE: All dimensions are in inches



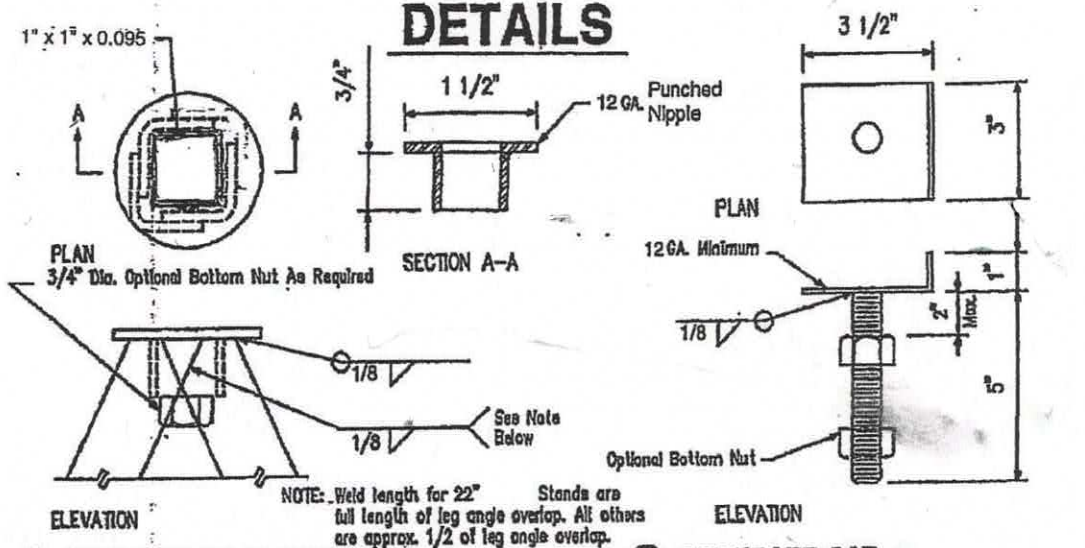
Pacific Consulting Engineers
 9739 North Vista Drive
 Kingman, AZ 86401
 916-296-7376

ABESCO
 5851 FLORENZ - PERKINS ROAD
 SACRAMENTO, CAL 95828
 PH: (800) 382-8831
 FAX: (916) 383-5207

LISTED BY CAPITOL ENGINEERING
 LABORATORIES, LISTING #6365

Sheet	6 of 8
Date	
Rev	
Drawing	

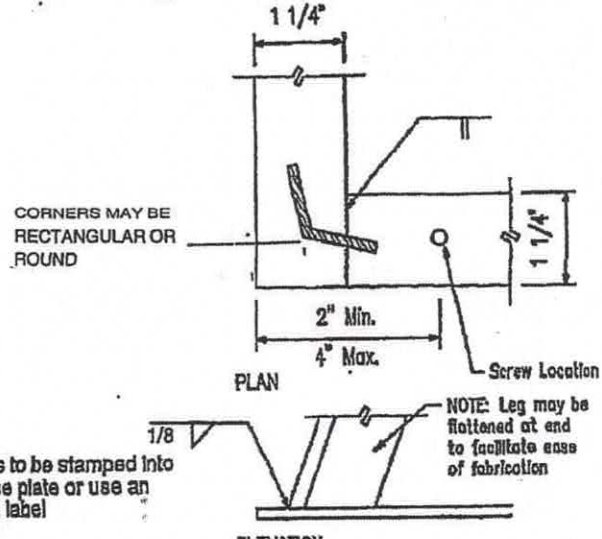
DETAILS



① TOP COLLAR CONNECTION

② STANDARD CAP

SCALE: 3" = 1'-0"



⑤ LEG TO BASE CONNECTION

SCALE: Half Size

ABESCO INC
 CEL LISTING 3 6365
 TEST # 604 / 880
 3000 lb CAPACITY

Label is to be stamped into
 the base plate or use an
 applied label

④ LABEL

SCALE: None

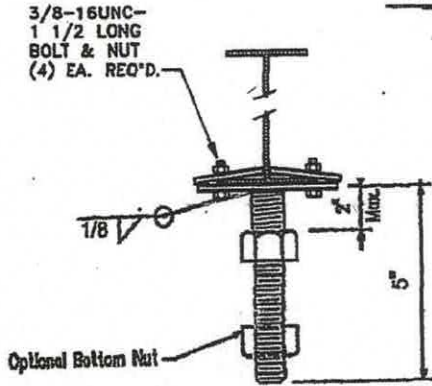


Pacific Consulting Engineers
 9739 North Vista Drive
 Kingman, AZ 86401
 916-296-7376

ABESCO
 5851 FLORIN - PERKINS ROAD
 SACRAMENTO, CAL. 95828
 PH: (800) 382-8831
 FAX: (916) 383-9207
 LISTED BY CAPITOL ENGINEERING
 LABORATORIES, LISTING #6365

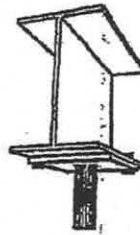
Sheet:	7 of 8
Date:	
Rev:	
Drawing:	

ALTERNATE PIER CAPS

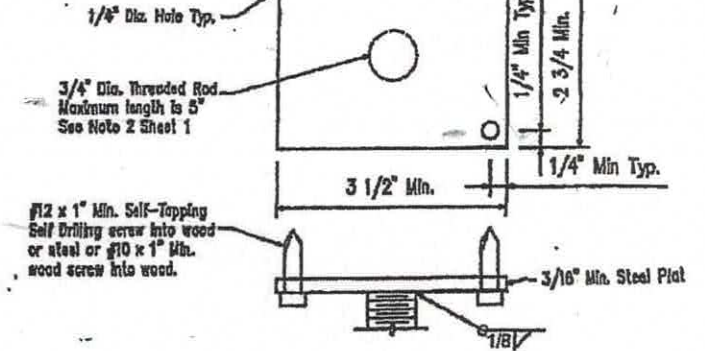


Perspective View
 Not to Scale

③ ALTERNATE BOLT ON CAP



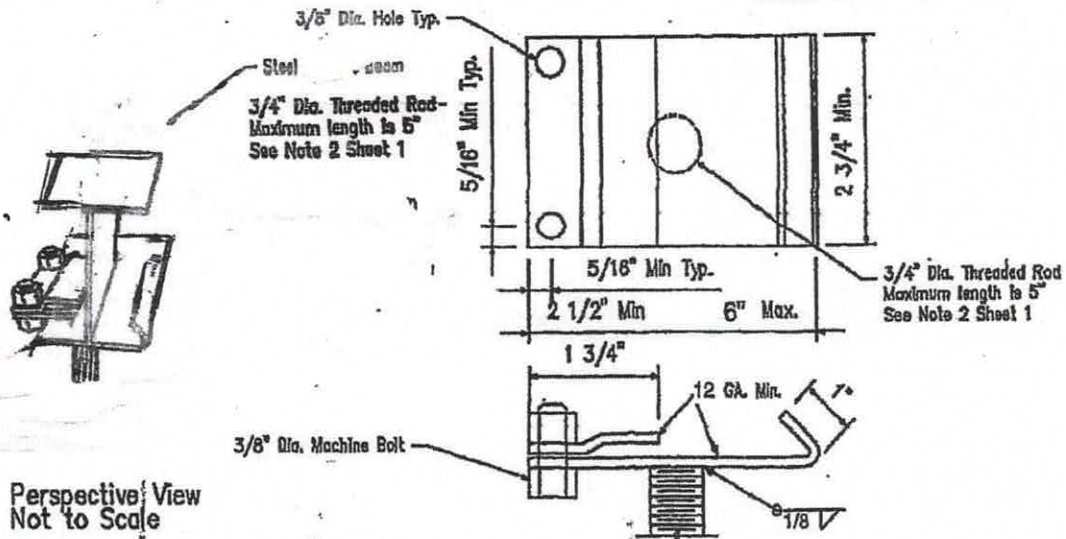
Steel Channel Beam or Wood Girder
 (Steel beam shown)



① ALTERNATE FLAT CAP

Scale: Half Size

Scale: Half Size



Perspective View
 Not to Scale

② ALTERNATE CAP FOR BEAM

Scale: Half Size



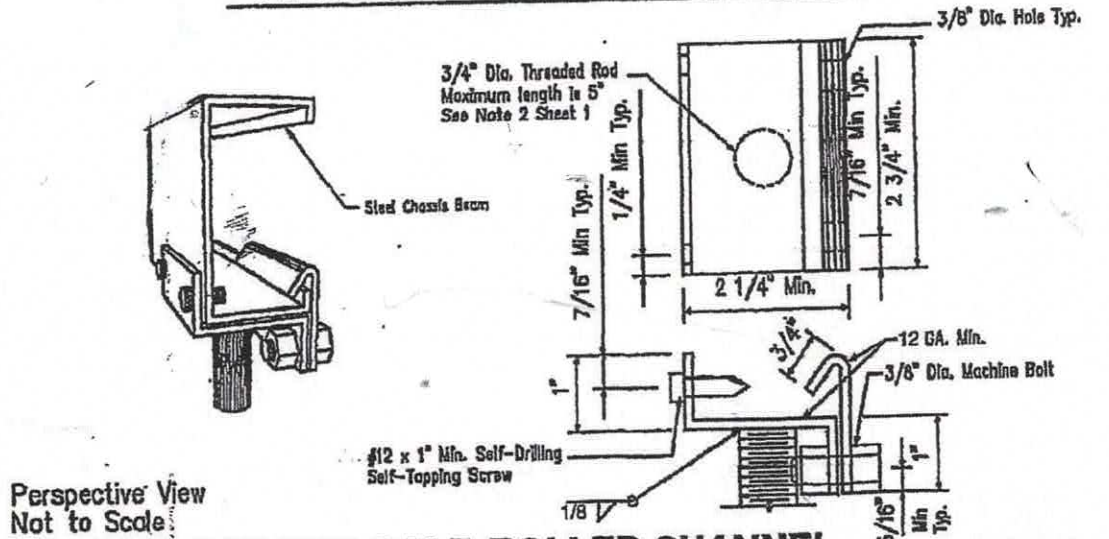
Pacific Consulting Engineers
 9739 North Vista Drive
 Kingman, AZ 86401
 916-296-7376

ABESCO
 5851 FLORIN - PERKINS ROAD
 SACRAMENTO, CALIF. 95829
 PH: (800) 382-8831
 FAX: (916) 383-5207

LISTED BY CAPITOL ENGINEERING
 LABORATORIES. LISTING #6365

Sheet	8 of 8
Date	02/04/2008
Rev	12/30/09
Drawing	043CUT5.DWG

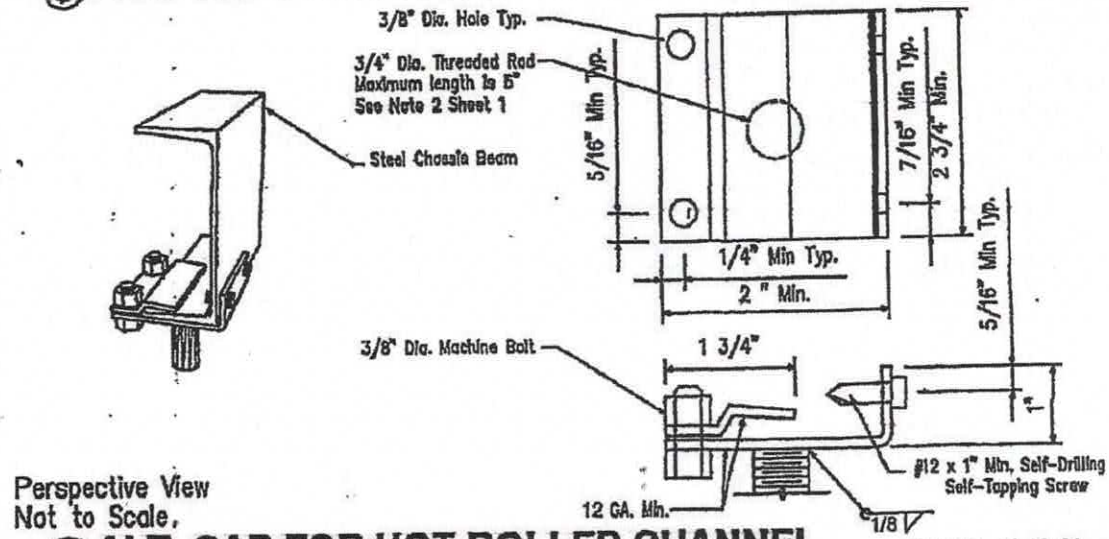
ALTERNATE PIER CAPS



Perspective View
 Not to Scale

③ ALT. CAP FOR COLD ROLLED CHANNEL

SCALE: Half Size



Perspective View
 Not to Scale

④ ALT. CAP FOR HOT ROLLED CHANNEL

SCALE: Half Size



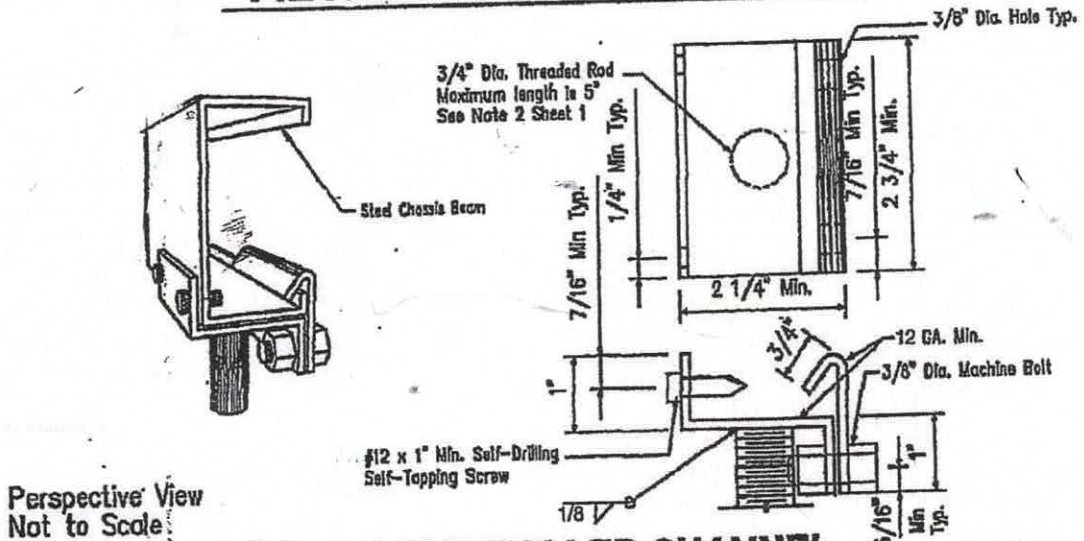
Pacific Consulting Engineers
 9739 North Vista Drive
 Kingman, AZ 86401
 916-296-7376

ABESCO
 5851 FLORIN - PERKINS ROAD
 SACRAMENTO, CA 95829
 PH: (800) 382-8831
 FAX: (916) 383-5207

LISTED BY CAPITOL ENGINEERING
 LABORATORIES. LISTING #6365

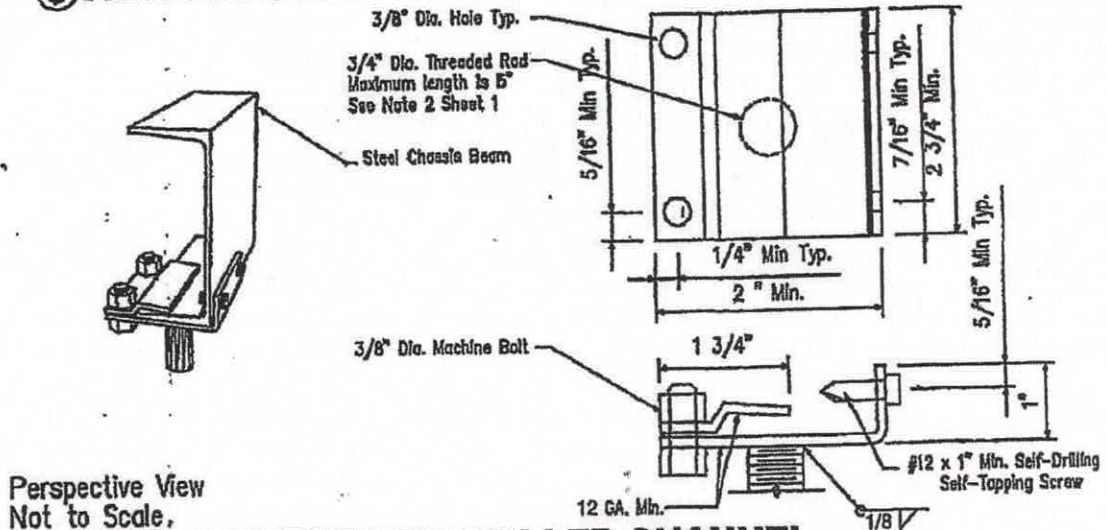
Sheet:	6 of 6
Date:	02/04/2008
Rev:	12/30/09
Drawing:	043CUT5.DWG

ALTERNATE PIER CAPS



③ ALT. CAP FOR COLD ROLLED CHANNEL

SCALE: Half Size



④ ALT. CAP FOR HOT ROLLED CHANNEL

SCALE: Half Size